

4mm Bleed

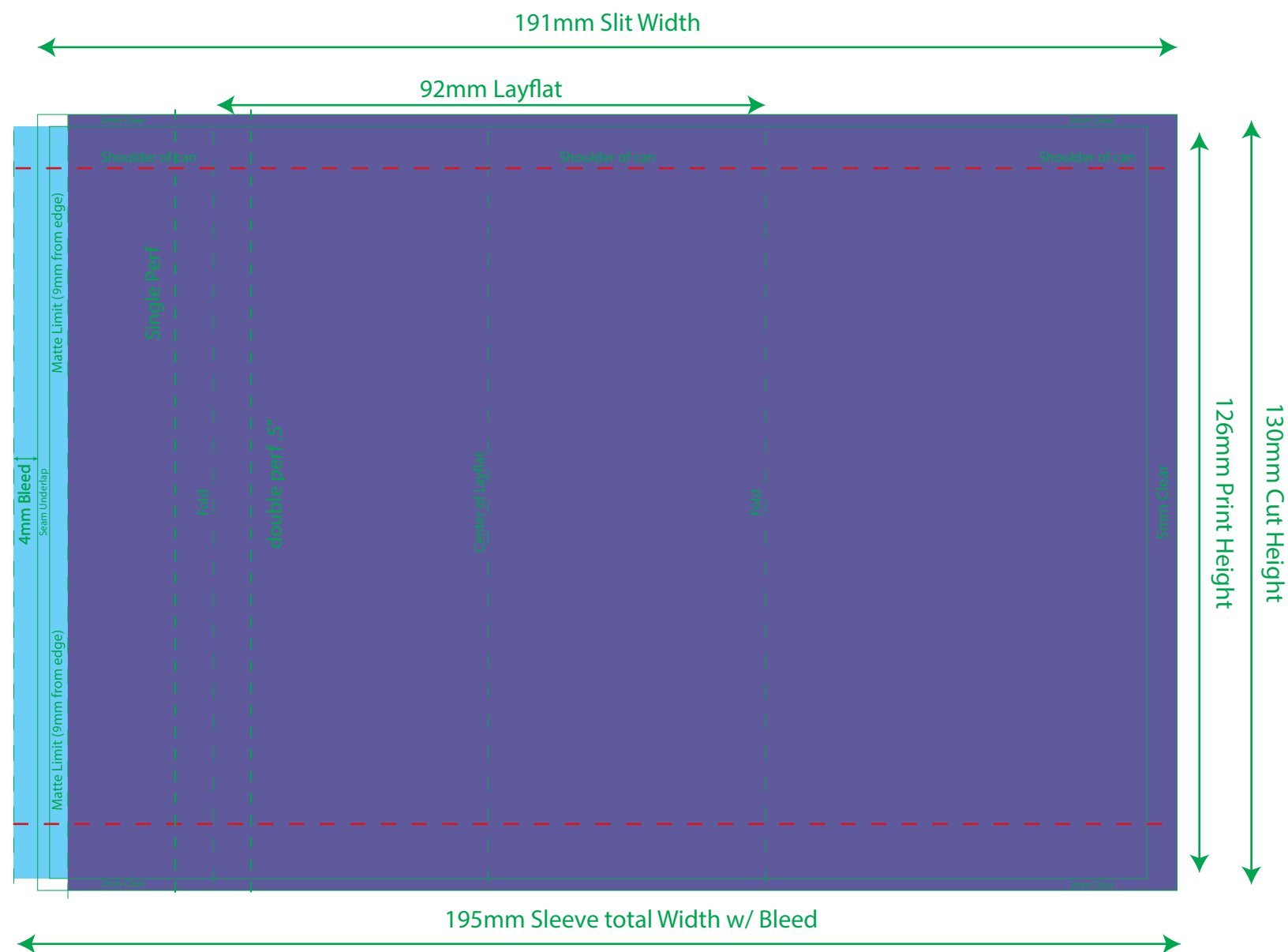
Seam Underlap

Matte Limit (9mm from edge)

Matte Limit (9mm from edge)

S25-0000 - Customer - Description - Finish

Global Can - 250ml 92mm LF x 130mm CH



$$((\text{Layflat} \times 2) + 2\text{mm} + 5\text{mm} = \text{Slit Width})$$

Please include an extra 4mm of Bleed on left side for both Art and White Ink

TECHNICAL SWATCHES

These swatches are used to show size, folds, and copy limit ONLY. Do not manipulate them or use them in the design of your artwork.



Pure Material / Can



Die



Copy Limit



WhiteX1



Matte Varnish

WHITE INK SWATCH

This swatch should only be used on the "White Layer" to indicate where white ink needs to print

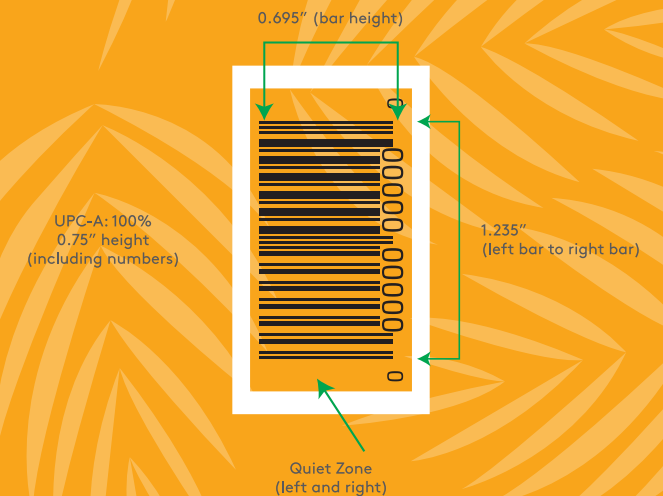
***When submitting final art. Please outline all fonts, delete all hidden or unwanted artifacts and embed all images.**

wildpack

BEVERAGE INC.

SUGGESTED BARCODE PLACEMENT AND SIZE

Vertical Orientation (to scale)



Tip: Avoid creating barcodes using red, light pink, orange, light brown, yellow, white, and metallic colors.

PLEASE NOTICE

- Do not edit or remove the White layer (unless knockout effects are desired. Request instructions file for that). This is an in-between ink blanket to ensure the metallic aspect of the can doesn't show through. The layer contains a rectangle filled with "whitex1" swatch and set to overprint;
- Include all artwork elements in one layer only; **Art Layer**
- Please** outline (or expand) all fonts (request assistance if needed);
- Please** embed all images (request assistance if needed);
- Do not include art elements inside the clear area;

Please Sign Here to Approve