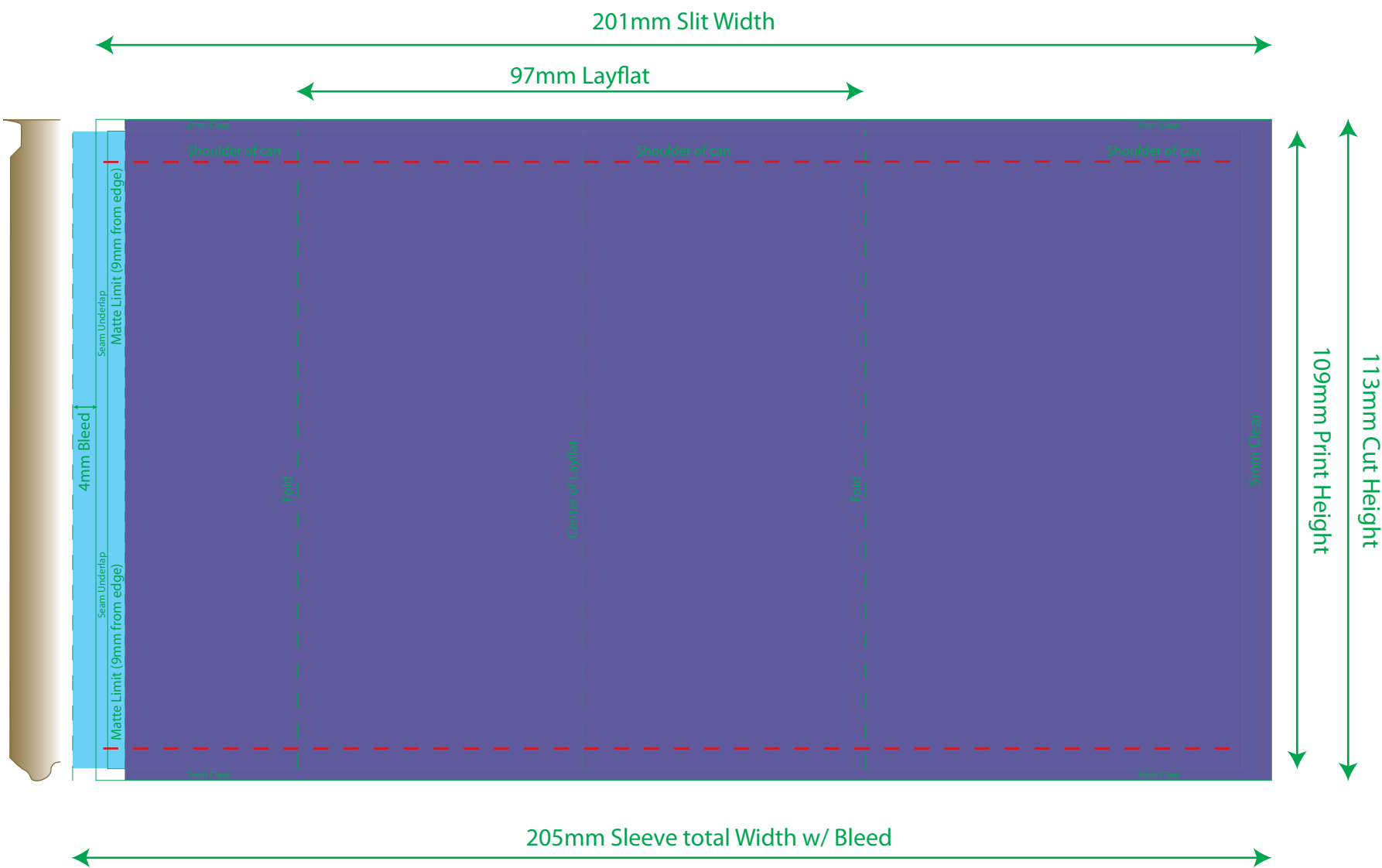


# S28-0000 - Customer - Description - Finish

## Ball 250mL SLEEK 97mm LF x 113mm CH



$((\text{Layflat} \times 2) + 2\text{mm} + 5\text{mm} = \text{Slit Width})$

Please include an extra 4mm of Bleed on left side for both Art and White Ink

### TECHNICAL SWATCHES

These swatches are used to show size, folds, and copy limit ONLY. Do not manipulate them or use them in the design of your artwork.



Pure Material / Can



Die



Copy Limit

### WHITE INK SWATCH

This swatch should only be used on the "White Layer" to indicate where white ink needs to print



WhiteX1



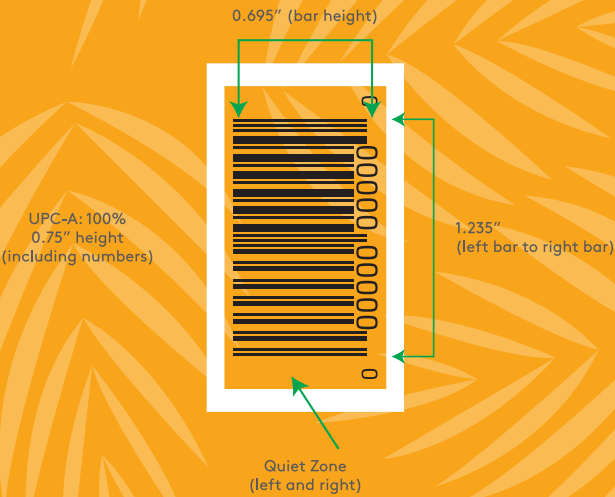
Matte Varnish

**\*When submitting final art. Please outline all fonts, delete all hidden or unwanted artifacts and embed all images.**

**wildpack**  
BEVERAGE INC.

### SUGGESTED BARCODE PLACEMENT AND SIZE

Vertical Orientation (to scale)



Tip: Avoid creating barcodes using red, light pink, orange, light brown, yellow, white, and metallic colors.

### PLEASE NOTICE

- Do not edit or remove the White layer (unless knockout effects are desired. Request instructions file for that). This is an in-between ink blanket to ensure the metallic aspect of the can doesn't show through. The layer contains a rectangle filled with "whitex1" swatch and set to overprint;
- Include all artwork elements in one layer only; **Art Layer**
- Please** outline (or expand) all fonts (request assistance if needed);
- Please** embed all images (request assistance if needed);
- Do not include art elements inside the clear area;

Please Sign Here to Approve